

Educational Assessment

Introduction

Educational Assessment is a means of analyzing the capacities of existing facilities to support curriculum and the elements of the physical environment that impact a student's ability to learn. It is not as cut and dry as code compliance or physical condition, and therefore, the recommendations should be weighed against the capacity to make the changes and the overall benefit of the improvements.

Inputs to the Educational Assessment include:

- District limits for students per teaching station
- Building utilization diagrams
- Physical walkthrough of each building
- Interviews with building level administrators

General Definitions/Descriptions

Teaching Stations

- Elementary - a general education classroom where a teacher "owns" their classroom. Specials such as music, art and physical education are not considered teaching stations.
- Middle School – general education core classrooms for Math, Language Arts, Social Studies and Science in a team structure. Students receive instruction in their core classrooms and then move on to exploratory subjects such as music, art, tech ed., etc. while the team teachers have shared Team and individual planning time. Exploratory classrooms are not considered teaching stations. The Middle School model results in lower capacities.
- Junior/Senior High – general education and specialized education spaces are all considered teaching stations. If teachers "own" their classrooms, the capacity of the building is reduced to 85%. If the teachers do not, and have planning spaces outside of the classroom, the capacity of the building can be 100%.
- Special Education whether Resource (drop-in) or Categorical (designated such as EI, EMI, etc) spaces are not considered teaching stations.
- Capacity calculations will vary depending on how the building is utilized. Ranges are given depending on whether classroom sized spaces can be utilized as teaching stations, often by displacing other uses. The formula is:
 - **#Teaching Stations * Students/Teaching Station = #Students**

Natural Light

- It is generally accepted that the presence or absence of natural light impacts the ability of students to learn. Educational spaces should have vision to the outside at student eye level to reinforce their connection to the outside. If spaces cannot have direct vision to the outside, then clerestory (high) level windows or skylights can be utilized to provide daylighting to the spaces.

Acoustics

- Proper acoustics enhances the ability of students to comprehend speech and to focus on tasks. Spaces should be isolated from each other with acoustic partitions that block the transmission of sound from space to space. Reverberation should be controlled within a space to enhance speech intelligibility. Mechanical and other non-speech noise should be controlled to levels that

do not impact the educational environment. Special consideration should be given to spaces with students on the autism spectrum.

Code Issues Impacting Education

- Corridors are a means of fire control and life safety egress. Furniture, open storage, and other flammable materials are not allowed by code. Special measures can be taken to designate the corridors for educational use in new construction, but this can be difficult in existing building.

Indoor Air Quality

- Musty odors can indicate the presence of water in a building which can lead to indoor air quality issues and problems for students with allergies and odor sensitivity.
- Mechanical systems that do not introduce outside air can lead to buildup of carbon dioxide which impacts student learning. Mechanical systems can be improved to monitor carbon dioxide and introduce appropriate amounts of fresh air into a space.
- Individual control of the mechanical system within a space allow the occupants to adjust the temperature to match the needs of the students.
- Air movement is required, however, at times can create a comfort issue for occupants if the air is blowing too hard. Proper air distribution and diffusion can enhance occupant comfort.

Furnishings

- 21st Century Learning spaces feature furnishings that are lightweight and easily reconfigured to support individual, small group and large group configurations. Student seating should be size-appropriate and ergonomic with features flexible features that allow students to fidget.

Program

- Program category includes any new programs that the district, administrators or staff request for consideration or existing programs that require adjustments to adequately deliver the curriculum.

Capacity Matrix

| School Building | Current Enrollment | Five Year Projected Enrollment (StanFred) | Students per Teaching Station per District Standards | District Functional Capacity | Current Condition | | Reconfiguration | | Additions | | Notes |
|---------------------------------|--------------------|---|--|------------------------------|--------------------------------|-------------------|---|---------------------------------|--|----------------------------------|---|
| | | | | | Current Teaching Station Count | Current Capacity | Possible Teaching Station Count, No Additions | Possible Capacity, No Additions | Possible Teaching Station Count with Additions | Possible Capacity with Additions | |
| High School | | | 30 | 1900 | 72 | 1836 ¹ | 72 | 2160 ² | 72 | 2160 ² | ¹ 85% Utilization = teachers own their classroom ² 100% utilization = teachers DON'T own their classrooms |
| Chippewa Middle School | | | 30 | 950 | 26 | 780 ³ | 39 | 1170 ⁴ | 39 | 1170 ⁴ | ³ Middle School Model (count only Ma, SS, LA, Sci) ⁴ Junior High Model |
| Kinawa Middle School | | | 29.5 | 900 | 27 | 796 ⁵ | 36 | 1062 ⁶ | 36 | 1062 ⁶ | ⁵ Middle School Model (count only Ma, SS, LA, Sci) ⁶ Junior High Model (reduced to account for Montessori) |
| Bennett Woods Elementary | | | 26.2 | 475 | 18 | 471 | 19 | 497 ⁷ | 23 | 602 ⁷ | ⁷ Conversion of Computer Lab to teaching station |
| Central Elementary | | | 26.2 | 425 | 13 | 340 | 16 | 419 ⁸ | 19 | 497 ⁸ | ⁸ Art, Music and SE displaced |
| Cornell Elementary | | | 26.2 | 500 | 19 | 497 | 21 | 550 ⁹ | 22 | 576 ⁹ | ⁹ Conversion of Computer Lab and part of Media Center |
| Hiawatha Elementary | | | 26.2 | 600 | 20 | 524 | 24 | 628 ¹⁰ | 26 | 681 ¹⁰ | ¹⁰ Displace SE, Basic, Core Enrichment and ELL |
| Edgewood Elementary | | | 26.2 | 300 | 0 | 0 | 5 | 131 | 5 | 131 ¹¹ | ¹¹ Convert west pod to 1-section building |
| Wardcliff Elementary | | | 26.2 | 300 | 0 | 0 | 0 | 0 | 5 | 131 ¹² | ¹² Convert south wing to 1-section building |
| Total Secondary Capacity | | 3023 | | 3750 | | 3412 | | 4392 | | 4392 | |
| Total Elementary Capacity (K-4) | | 1713 | | 2600 | | 1832 | | 2225 | | 2618 | |
| Total District Capacity | | 4736 | | 6350 | | 5244 | | 6617 | | 7010 | |

Educational Assessment

Okemos High School

Walkthrough Date: June 12, 2018

Data

Grade Levels Served: **9-12**

General Education Teaching Stations: **72**

Capacity based on District Capacity Limits: **1836 - 2160**

Curricular offerings include Math, Science, Social Studies, ELA, Vocal Music, Band, Orchestra, Baking/Life Skills, 2D and 3D Art, World Language, Drama, Photography, Tech/Woods Lab, PLTW/Engineering, and Physical Education.

6-period day

Support spaces include Media Center, Auditorium, Natatorium, Kiva and Cafeteria. Administration is on the ground floor with Guidance above on second floor.

This building adequately supports a high school curriculum in its current configuration. It has classrooms of adequate size in square or rectangular configuration. It has departmentally organized classroom wings in a two-story configuration. There are district-wide special education programs including BASIC (Autistic), CI (Cognitively Impaired) and EI (Emotionally Impaired) programs. Teachers own their classrooms despite the presence of departmental office space.

Natural Light

- All classroom spaces except computer labs and the Kiva have adequate natural light or views. The media center and student commons have skylights.

Acoustics

- Reverberation in the cafeteria is a concern. Provide acoustic panels and improve the sound system.
- Concern expressed about lack of PA system at the locker rooms and other smaller spaces within the building.
- Concern expressed about drum effect of rain in the open ceiling classrooms of the fine arts wing.
- There was some noticeable HVAC noise in the fine arts wing. Consider sound attenuation options.
- Auditorium was designed for the spoken word and doesn't accommodate vocal or instrumental performances well. Provide tunable acoustical materials.

Code Issues Impacting Education

- No issues noted during the walkthrough.

Indoor Air Quality

- There were no odors present at the time of walkthrough.
- Concern expressed about maintaining temperatures in the winter in classroom wings.

Furnishings

- Classroom furnishings vary by room. Chair/desk combinations should be replaced with flexible tables and loose ergonomic chairs. Approximately 90% of furnishings to be replaced.

- Media center furniture is solid wood, not flexible, and should be replaced to support collaborative learning with new, lighter-weight smaller tables for ease of reconfiguration and ergonomic student seats to support a project-based learning environment. Provide charging stations.

Enrollment

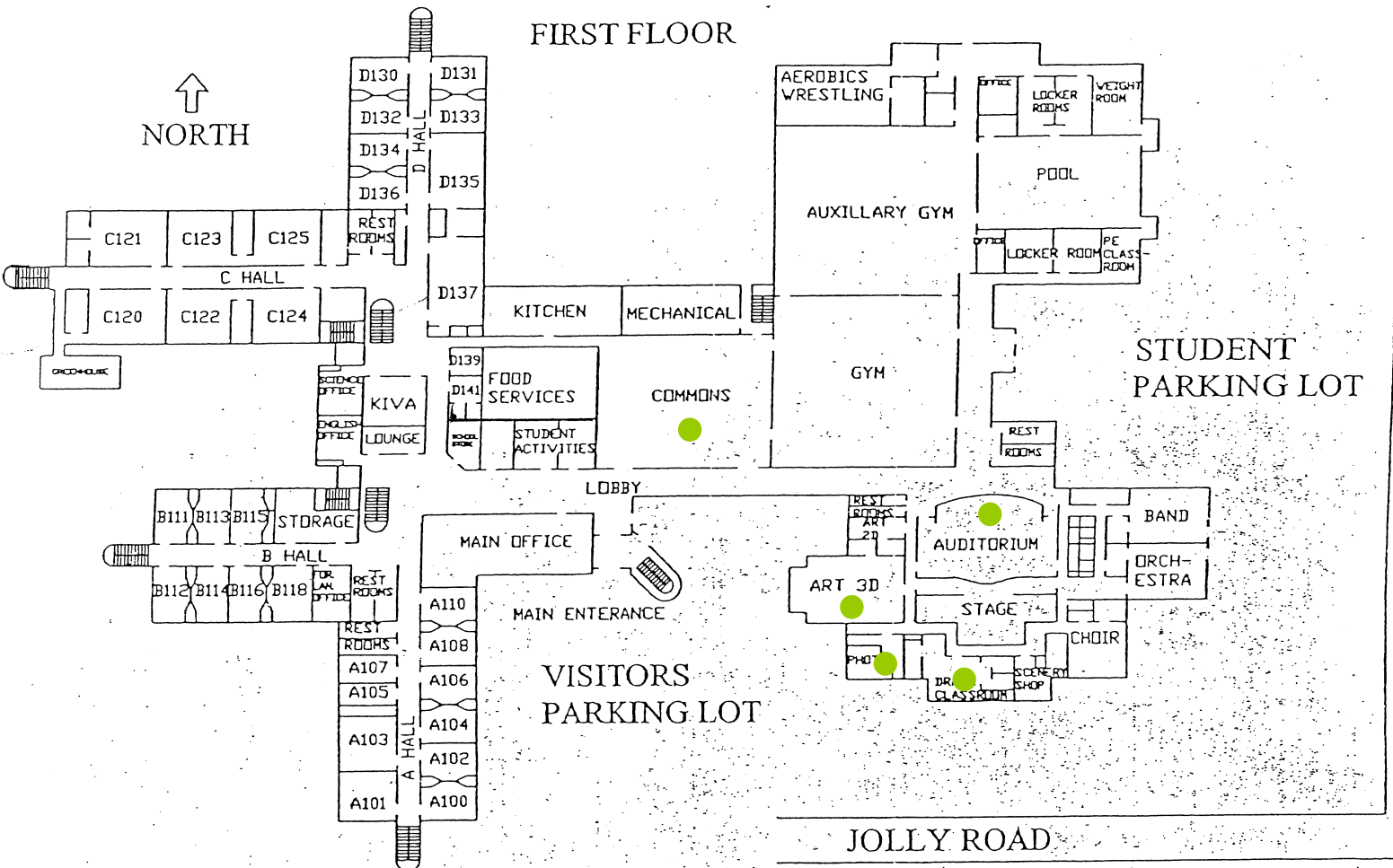
- There is additional capacity within the building to accommodate enrollment growth.
- Provide additional capacity within the cafeteria to maintain two lunch periods or consider adding a third lunch period.

Program

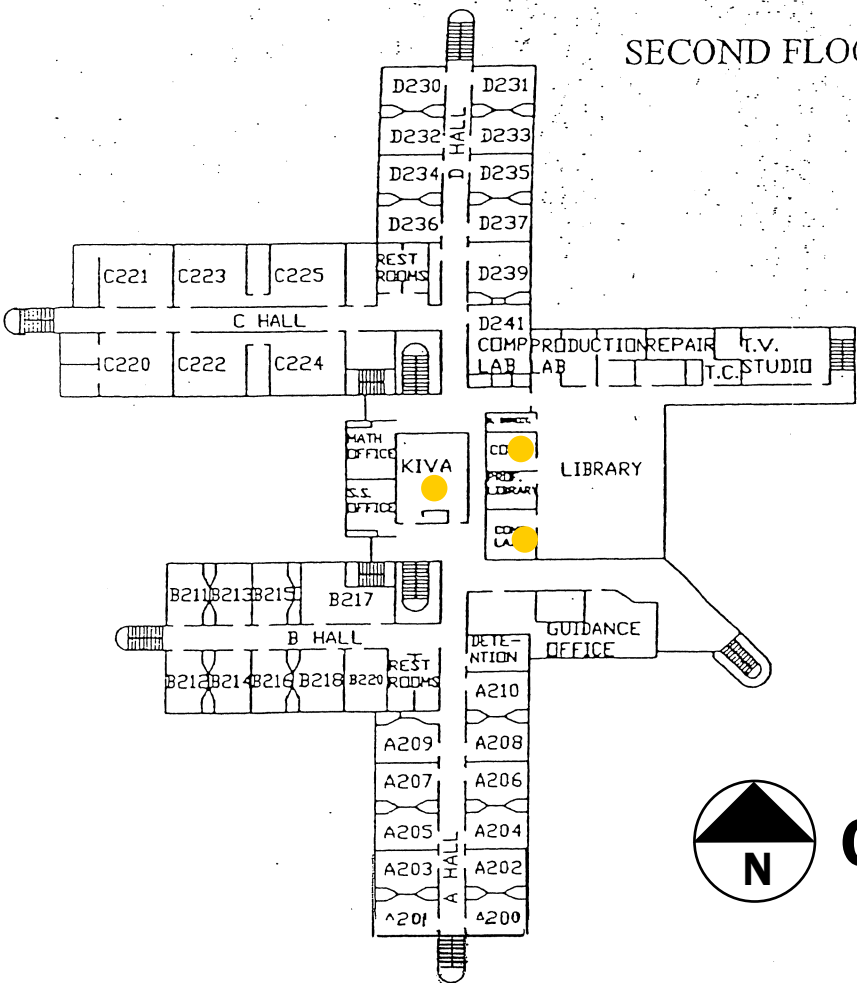
- Provide a multi-purpose performance/rehearsal space such as a grey-box to seat up to 125.
- Provide additional instrument storage for growing program. (on sinking fund master plan)
- Provide additional storage for extra-curricular storage.
- Provide Maker Space within the Media Center. Reconfigure Media Center as a Project Based Learning space.
- Provide outdoor dining space adjacent to the cafeteria but walled off from the main entrance.



FIRST FLOOR



SECOND FLOOR



Deficiencies Legend:

- Classrooms without natural light
- Code compliance: furniture in corridors
- Indoor Air Quality concerns
- Acoustic concerns



Okemos High School

HULETT ROAD

HULETT ROAD

Educational Assessment

Chippewa Middle School

Walkthrough Date: May 29, 2018

Data

Grade Levels Served: **7-8**

General Education Teaching Stations: **26 (MS Model) – 39 (Jr High Model)**

Capacity based on District Capacity Limits: **780 - 995**

Specials including Vocal Music, Band, Orchestra, Foods/Life Skills, Art, Yearbook, Spanish, Drama, Tech Lab, Design Thinking, and Physical Education. PE is provided daily.

7-period day – 4 Academic, PE, 2 Elective/Exploratory

Support spaces include Media Center, Auditorium and Cafeteria. The community Senior Center is located within this building.

This school supports a middle school curriculum adequately in its current configuration. It has classrooms of adequate size in a rectangular configuration. It was originally designed for as a high school, originally as a California model without enclosed corridors. At some point corridors were added to connect the buildings together. This results in rather lengthy corridors. There are district-wide special education programs including AI (Autistic), CI (Cognitively Impaired) and EI (Emotionally Impaired) programs. There are four spaces that are utilized for Montessori program. Teachers work in 3-person teams. The program is run on a middle school model with core curriculum and exploratory classes.

Natural Light

- Most classroom and other student-occupied spaces have adequate natural light or views except for the core spaces within the southeast and southwest classroom wings. Each of these spaces could have skylights added to introduce natural light.

Acoustics

- Most walls extend past the ceiling and provide effective acoustic barriers from classroom to classroom and classroom to hallway.
- Remove operable partitions in the southwest classroom wing and replace with acoustically treated partitions.
- Horizontal unit ventilators are utilized in the classrooms. These are the loudest of the mechanical systems utilized in school facilities. When these systems have reached their useful life, they should be replaced by a quieter system such as a ducted vertical unit ventilator system.

Code Issues Impacting Education

- No issues noted during the walkthrough.

Indoor Air Quality

- The building is fully air conditioned.
- There were no odors or indoor air quality issues present at the time of walkthrough.
- Changing to vertical unit ventilators with ductwork will improve air distribution throughout the classrooms.

Furnishings

- Existing classroom furnishings are primarily tables/individual tables and loose chairs. Some classrooms have different options for table type including some standing tables. The Montessori classrooms have newer equipment and any new furniture purchases should be similar in style for flexibility. The existing student seats are hard plastic, but in good condition. Any new student seating purchases should be ergonomic.
- Media center furniture is solid wood, not flexible, and should be replaced when it has reached its useful life with new, lighter-weight smaller tables for ease of reconfiguration with ergonomic student seats to support a project-based learning environment.

Enrollment

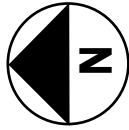
- There is additional capacity within the building to accommodate enrollment growth.
- The cafeteria is reported to be too small. This could be expanded by incorporating some or all of the commons space.

Program

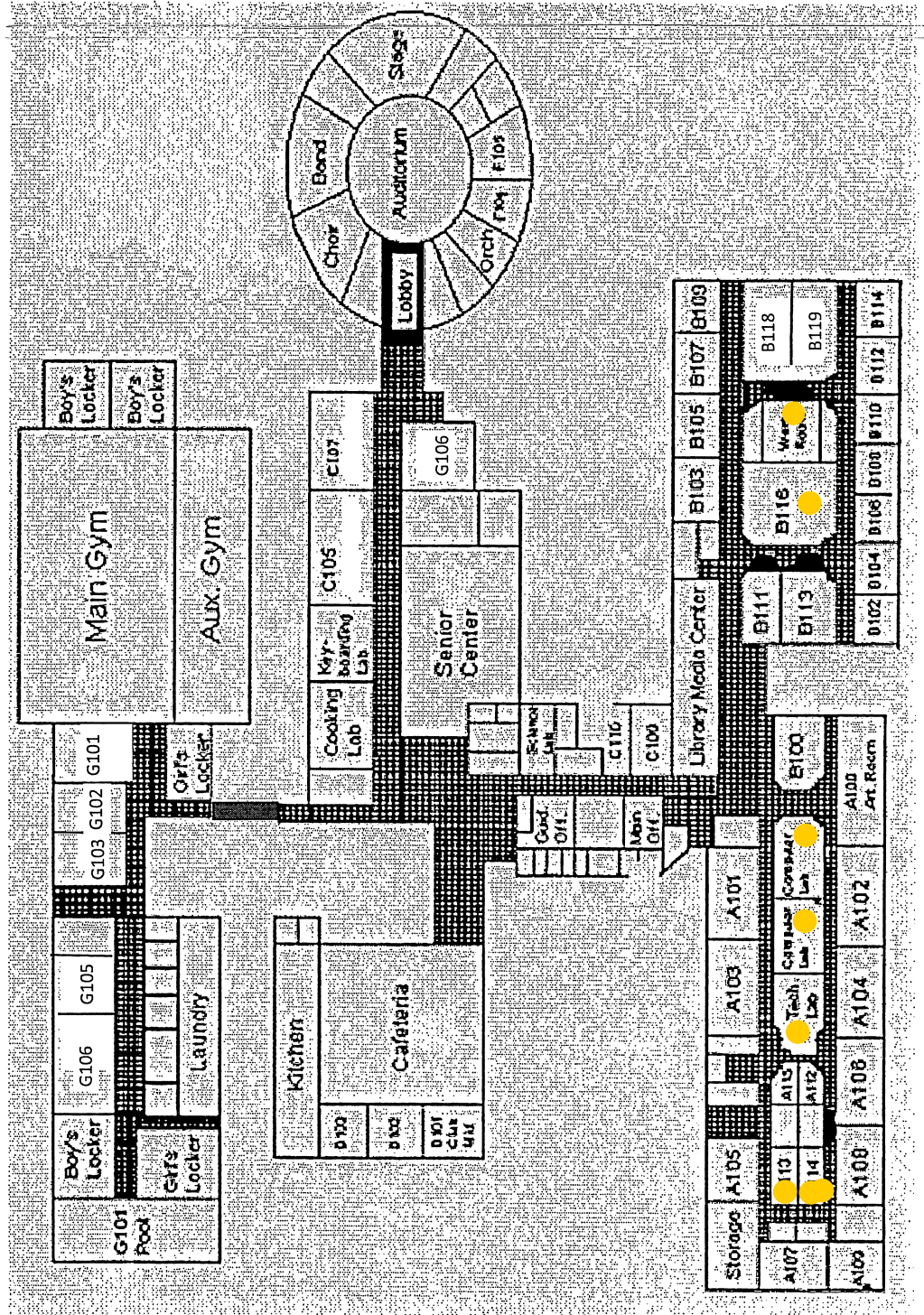
- Remove carpeting and replace with resilient floor tile at Art Room
- Provide instrument storage outside of the classroom to allow for student access at the end of the day without having to keep the rehearsal rooms open.
- Provide additional electrical outlets in the Special Education Resource rooms adjacent to the cafeteria.
- Remodel Tech Shop to match curricular needs.

Deficiencies Legend:

- Classrooms without natural light
- Code compliance: furniture in corridors
- Indoor Air Quality concerns
- Acoustic separation



Chippewa Middle School



Educational Assessment **Kinawa Middle School**

Walkthrough Date: May 29, 2018

Data

Grade Levels Served: **5-6**

General Education Teaching Stations: **27 (MS Model) – 36 (Jr High Model)**

Capacity based on District Capacity Limits: **796 - 903**

Specials including Science, Vocal Music, Band, Orchestra, Life Skills, Art and Physical Education. Music and PE are provided every other day. Other exploratory programs are offered on a grade level basis.

7-period day – 4 Academic, 1 Music/PE, 1 Fit (academic support or enrichment), 1 Exploratory

Support spaces include Media Center, Auditorium, Cafeteria and Kiva.

This middle school has some challenges due to lack of natural light and acoustic separations. It has classrooms of relatively standard size in a rectangular configuration with demountable partitions between most spaces. It was originally designed for as a 6-8 Middle School in an era where natural light and windows were limited to save energy. There are district-wide special education programs including ASD (Autistic), CI (Cognitively Impaired) and EI (Emotionally Impaired) programs. There are four spaces in the former Industrial Arts wing that are utilized for Montessori program. Teachers work in 2-person or 3-person teams depending on certifications. The program is run on a middle school model with core curriculum and exploratory classes.

Natural Light

- The floor plan is a compact pod plan with significant number of spaces without natural light or views including general education classrooms, science rooms, resource rooms, the Media Center, Music rooms, and Gym lack natural light. Each of these spaces could have skylights added to introduce natural light.

Acoustics

- Most walls are demountable partitions, excluding music, Montessori (former industrial arts), Art, Auditorium and Gym. These do not extend past the ceiling and do not provide effective acoustic barriers from classroom to classroom and classroom to hallway. These should be replaced throughout with acoustically treated walls built to the roof deck.
- There were no mechanical acoustic issues present during the walkthrough.

Code Issues Impacting Education

- Music Storage in the corridor should be in metal lockers or a storage room.

Indoor Air Quality

- There were no odors or indoor air quality issues present at the time of walkthrough.
- Provide air conditioning at the Montessori classrooms.

Furnishings

- Existing classroom furnishings are primarily tables and loose chairs. There are some tablet arm chairs that should be replaced. The existing student seats are hard plastic, but in good condition. Any new student seating purchases should be ergonomic.

- Media center furniture has reached its useful life. Provide new furnishings - lighter-weight with smaller tables for ease of reconfiguration with ergonomic student seats to support a project-based learning environment.

Enrollment

- There is additional capacity within the building to accommodate enrollment growth.
- The cafeteria runs on two lunch periods and is crowded (previously ran on 3 periods). Expand the number of lunch periods or consider expanding the size of the cafeteria.

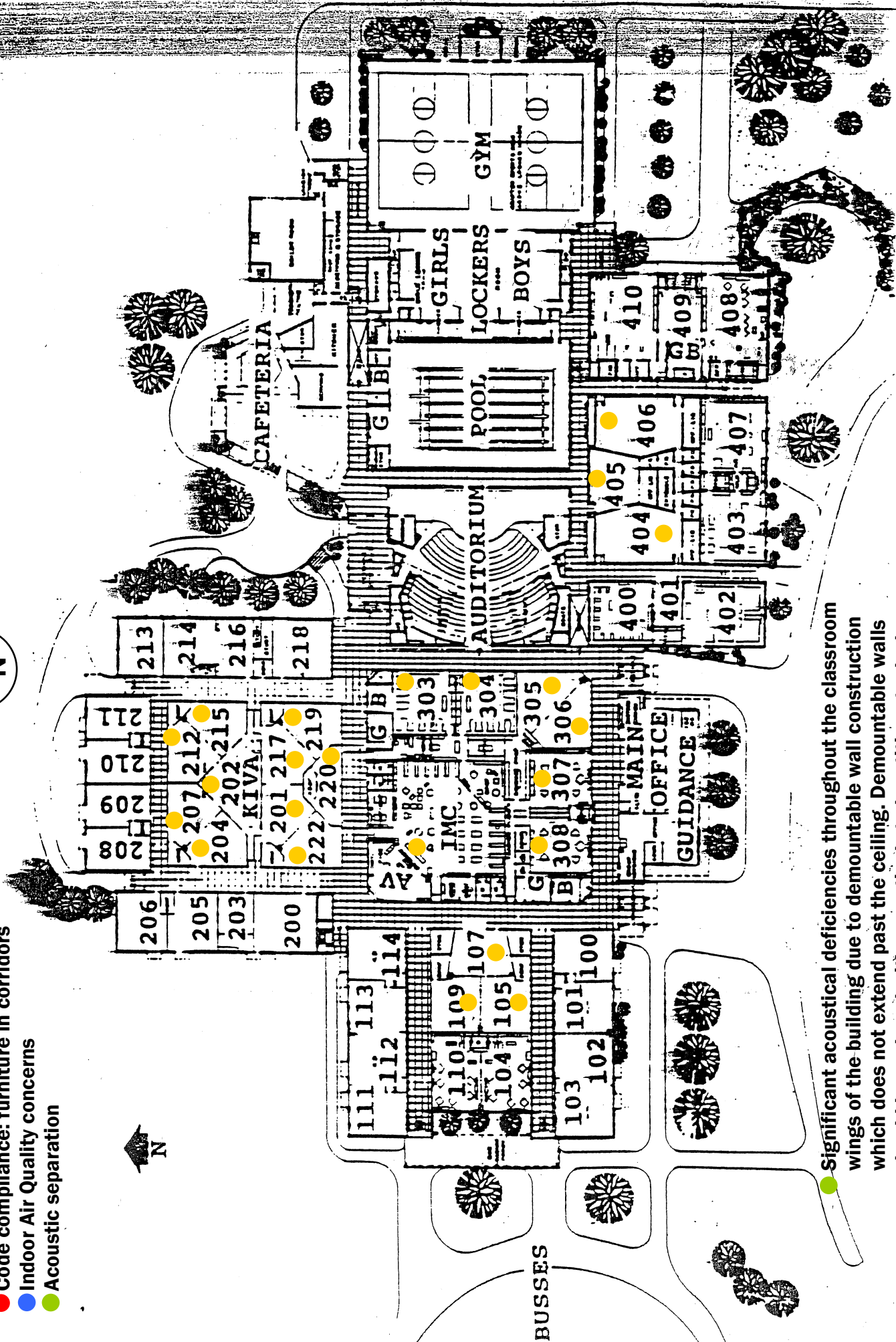
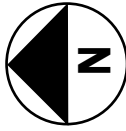
Program

- Refurbish pool for Physical Education use, or redevelop pool as a project-based-learning/STEM space or other function.
- Redevelop classroom wings to match to current/future curriculum needs.
- Adding ELL sections in 2018/19.

Deficiencies Legend:

- Classrooms without natural light
- Code compliance: furniture in corridors
- Indoor Air Quality concerns
- Acoustic separation

Kinawa Middle School



● Significant acoustical deficiencies throughout the classroom wings of the building due to demountable wall construction which does not extend past the ceiling. Demountable walls should be replaced with acoustical stud partitions to deck.

BUSSES

Educational Assessment

Bennett Woods Elementary

Walkthrough Date: May 31, 2018

Data

Grade Levels Served: **K-4**

General Education Teaching Stations: **18 - 19**

Capacity based on District Capacity Limits: **472 - 499**

Specials including Music, Art and Physical Education on an ABC schedule (one special per day per classroom)

Support spaces include Media Center and Cafeteria.

This is the newest elementary in the district and provides a welcoming environment for the students. It has uniquely shaped classrooms that provide breakout space within each classroom. Kindergarten is in a separate pod away from the main block of the school. Due to enrollment growth, there are now kindergarten classrooms in other areas of the building.

Natural Light

- The floor plan is very compact which creates a great deal of interior spaces without natural light or views particularly around but not including the Media Center. All general education spaces have natural light through either occupant-level windows or clerestory windows.
- Several special instruction classrooms/offices do not have natural light. This could be corrected with the introduction of tubular skylights if desired.
- The gymnasium, despite having three outside walls, does not have any natural light. Punched openings with translucent panels could be added to bring natural light into the space without the fear of glass breakage.

Acoustics

- Most classroom areas are acoustically isolated with no significant issues expressed. One area of concern was the original Kindergarten classrooms which are open to each other. This could be corrected architecturally but care should be taken not to impact supervision of the shared wet space between the classrooms.
- The Cafeteria is very reverberant and is not separated from the corridor system allowing noise to migrate to other areas of the building. This could be corrected architecturally.
- The entry towers are very reverberant and do not have any absorptive materials. This could be corrected with the addition of acoustical panels or fabrics.
- There were no significant mechanical sound issues present at the time of the walkthrough.

Code Issues Impacting Education

- There are no code issues impacting the use of the space educationally.

Indoor Air Quality

- The building is fully air conditioned.
- The cafeteria air distribution system blows directly on occupants and should be addressed to eliminate these issues.

Furnishings

- Existing classroom furnishings are flexible for current standards. The existing student seats are hard plastic, but in good condition. Any new student seating purchases should be ergonomic.
- Media center furniture is solid wood construction. When this furniture has reached its useful life, new furnishings should be lighter-weight with smaller tables for ease of reconfiguration with ergonomic student seats

Enrollment

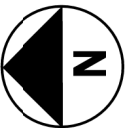
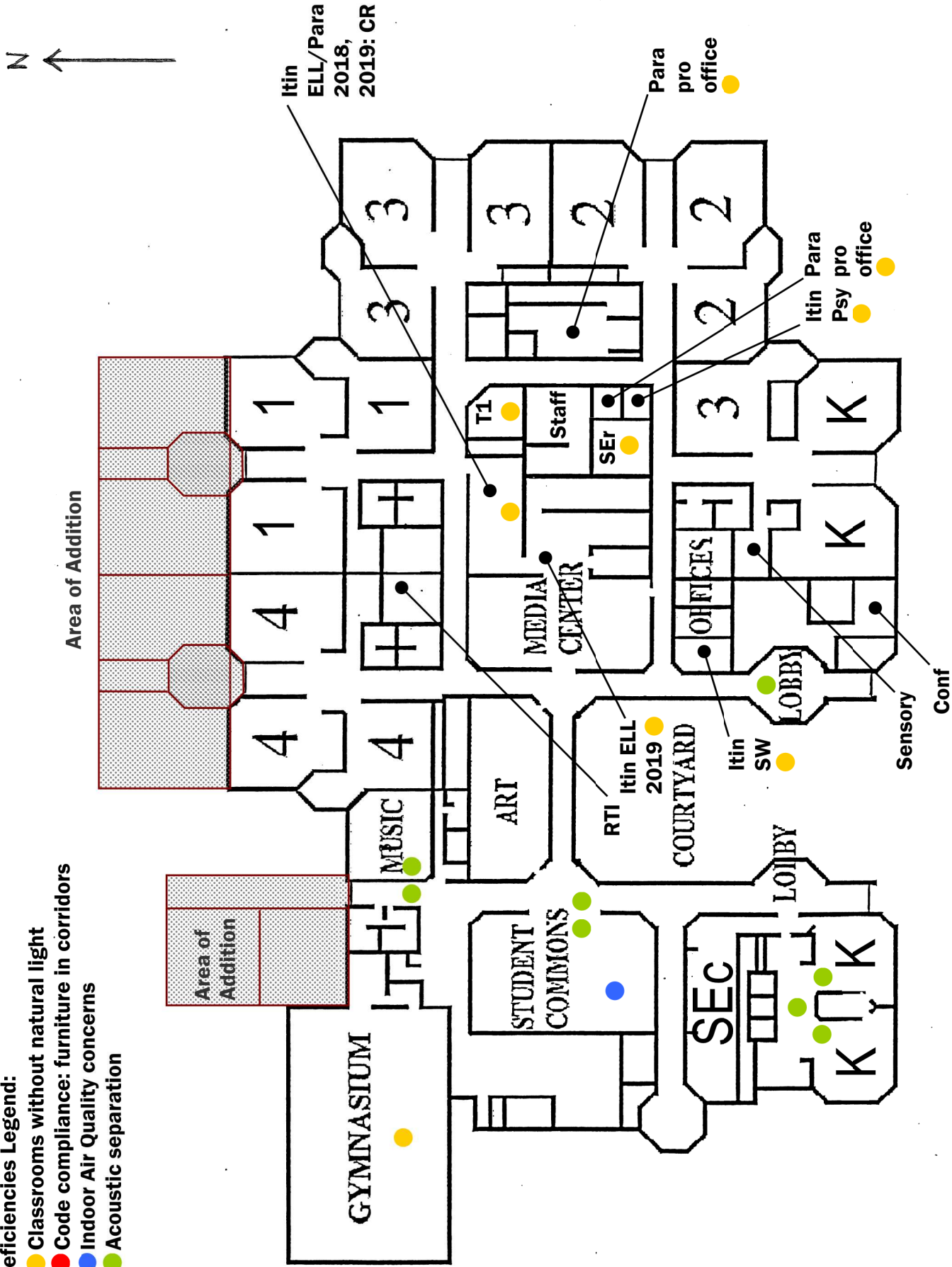
- A former computer lab will be converted to a classroom for the 2018/19 school year. This interior space is not ideal for a general education classroom. The building can support additions to create appropriate general education classrooms. See plans.
- If the enrollment trend increases, one additional Specials space should be added to the building to accommodate the schedule (ABCD Schedule).
- Special education and itinerant programs are being relocated due to enrollment.

Program

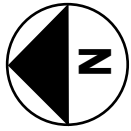
- The after-school programs have been displaced for the kindergarten program and are now currently housed in the cafeteria.

Deficiencies Legend:

- Classrooms without natural light
- Code compliance: furniture in corridors
- Indoor Air Quality concerns
- Acoustic separation



Bennett Woods Elementary



Bennett Woods Elementary



Area of Possible Addition

Educational Assessment

Central Elementary

Walkthrough Date: June 5, 2018

Data

Grade Levels Served: **PK-4**

General Education Teaching Stations: **13 - 16**

Capacity based on District Capacity Limits: **390 - 480**

Specials including Music, Art and Physical Education on an ABC schedule (one special per day per classroom)

Support spaces include Media Center and Cafeteria.

This is the oldest elementary in the district and provides a welcoming environment for the students despite being at the end of its useful life. It has classrooms of varied size in a square or rectangular configuration, some of which are smaller than recommended. This is a Montessori program and each classroom is multi-age. There is one non-Montessori PK classroom. There are two BASIC classrooms for autistic students. Given the age of the building, it may not be advisable to consider additions.

Natural Light

- The floor plan is a double loaded corridor which allows for natural light or views from nearly all student-occupied spaces.
- The Special Education Resource room in the east wing should have skylights added to introduce natural light.
- The gymnasium, despite having outside walls, does not have any natural light. Punched openings with translucent panels could be added to bring natural light into the space.

Acoustics

- Most classroom areas are acoustically isolated with no significant issues expressed.
- Two pairs of classrooms in the east wing have operable partitions that do not get utilized. Replace these with acoustically treated partitions.
- Horizontal unit ventilators are utilized in the classrooms. These are the loudest of the mechanical systems utilized in school facilities. When these systems have reached their useful life, they should be replaced by a quieter system such as a ducted vertical unit ventilator system. There were no significant mechanical sound issues present at the time of the walkthrough.

Code Issues Impacting Education

- There are two widened corridor areas that have furniture present. The issue can be addressed architecturally but will require significant modification. The State Fire Marshall will require removal of the furniture when they walk through.

Indoor Air Quality

- The building is not air conditioned. Provide air conditioning
- The horizontal unit ventilators do not effectively distribute air throughout the space. See recommendation for replacement in Acoustics section.
- Itinerant rooms in the west wing do not have any outside air.
- There was a musty odor in the Psychologist room and the Music room. These should be investigated for water infiltration.

Furnishings

- Existing classroom furnishings are flexible for current standards and the Montessori program. The existing student seats are hard plastic, but in good condition. Any new student seating purchases should be ergonomic.
- Media center furniture is solid wood construction. When this furniture has reached its useful life, new furnishings should be lighter-weight with smaller tables for ease of reconfiguration with ergonomic student seats.

Enrollment

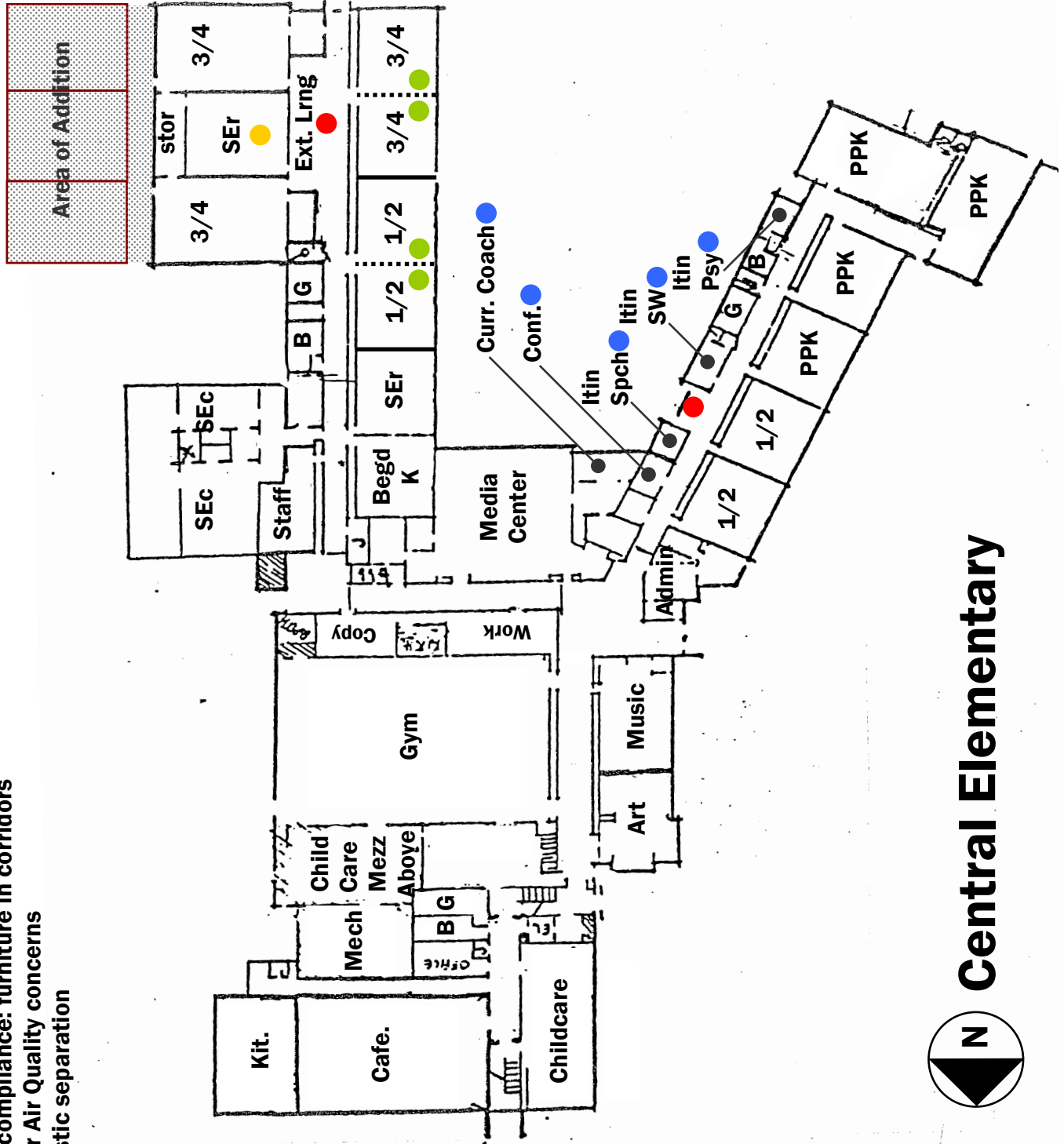
- There is a waiting list for enrolling in this school of choice.
- All existing classrooms are utilized, and the enrollment growth continues. The building can support additions to create appropriate general education classrooms. See plans.

Program

- Provide extended learning areas outside of the existing classrooms if possible and in any new additions.

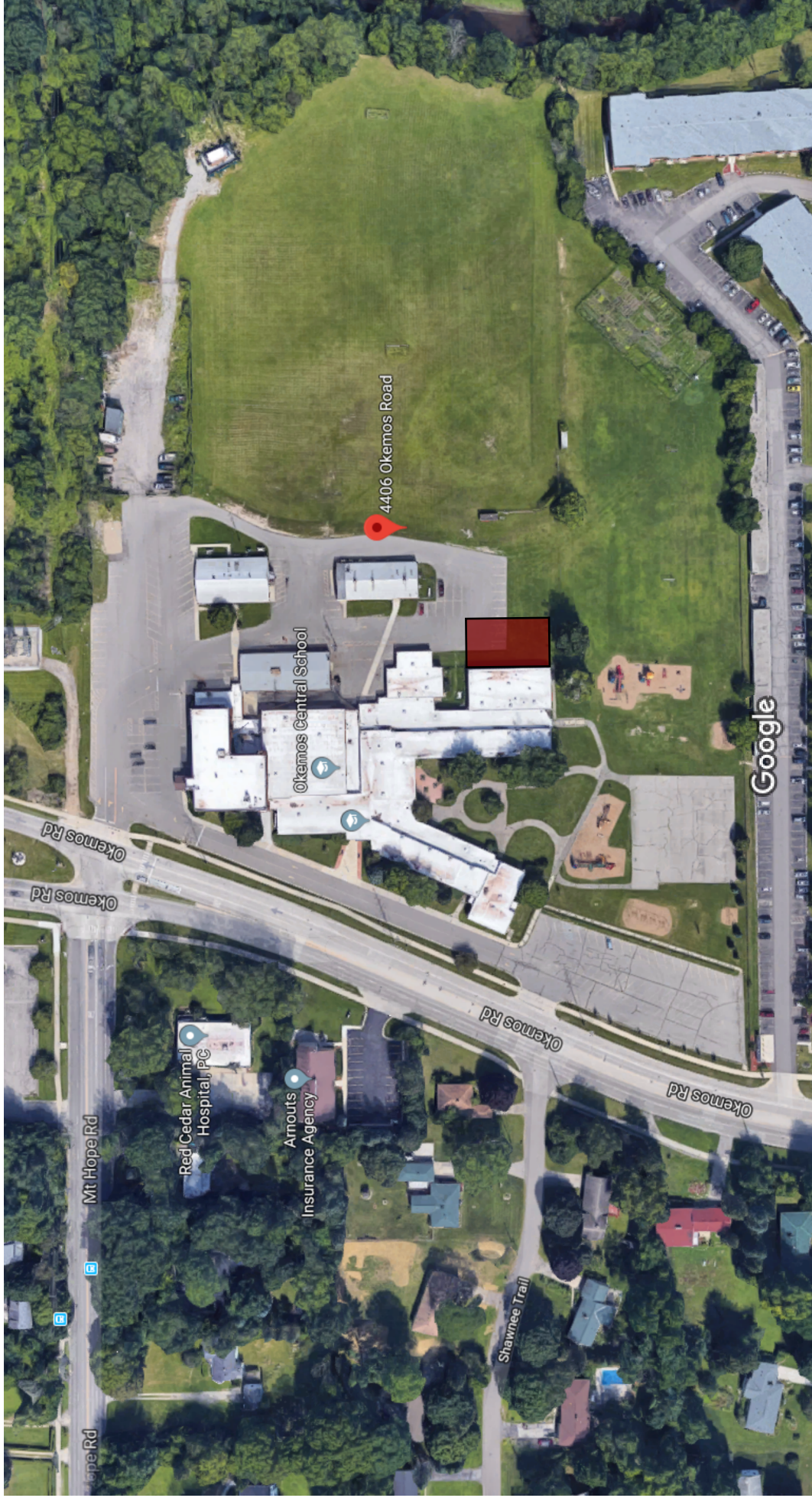
Deficiencies Legend:

- Classrooms without natural light
- Code compliance: furniture in corridors
- Indoor Air Quality concerns
- Acoustic separation

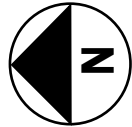


Central Elementary

4406 Okemos Rd
Central



Imagery ©2018 Google, Map data ©2018 Google 100 ft



Central Elementary



Area of Possible Addition

Educational Assessment

Cornell Elementary

Walkthrough Date: May 29, 2018

Data

Grade Levels Served: **PK-4**

General Education Teaching Stations: **19 - 21**

Capacity based on District Capacity Limits: **498 - 550**

Specials including Music, Art and Physical Education on an ABC schedule (one special per day per classroom)

Support spaces include Media Center and Cafeteria.

This elementary provides a welcoming environment for the students. It has classrooms of varied size in a square or rectangular configuration. There are no categorical special education programs.

Natural Light

- The floor plan is a double loaded corridor which allows for natural light or views from nearly all student-occupied spaces except for the Media Center, Learning Lab and itinerant spaces. Each of these spaces could have skylights added to introduce natural light.
- The gymnasium, despite having outside walls, does not have any natural light. Punched openings with translucent panels could be added to bring natural light into the space.

Acoustics

- Most classroom areas are acoustically isolated with no significant issues expressed.
- Horizontal unit ventilators are utilized in the classrooms. These are the loudest of the mechanical systems utilized in school facilities. When these systems have reached their useful life, they should be replaced by a quieter system such as a ducted vertical unit ventilator system. There were no significant mechanical sound issues present at the time of the walkthrough.

Code Issues Impacting Education

- No issues at the time of walkthrough.

Indoor Air Quality

- The general education classrooms are not air conditioned. Add air conditioning
- The horizontal unit ventilators do not effectively distribute air throughout the space. See recommendation for replacement in Acoustics section.
- There were no odors present at the time of walkthrough.

Furnishings

- Existing classroom furnishings are flexible for current standards. The existing student seats are hard plastic, but in good condition. Any new student seating purchases should be ergonomic.
- Media center furniture is solid wood construction. When this furniture has reached its useful life, new furnishings should be lighter-weight with smaller tables for ease of reconfiguration with ergonomic student seats.

Enrollment

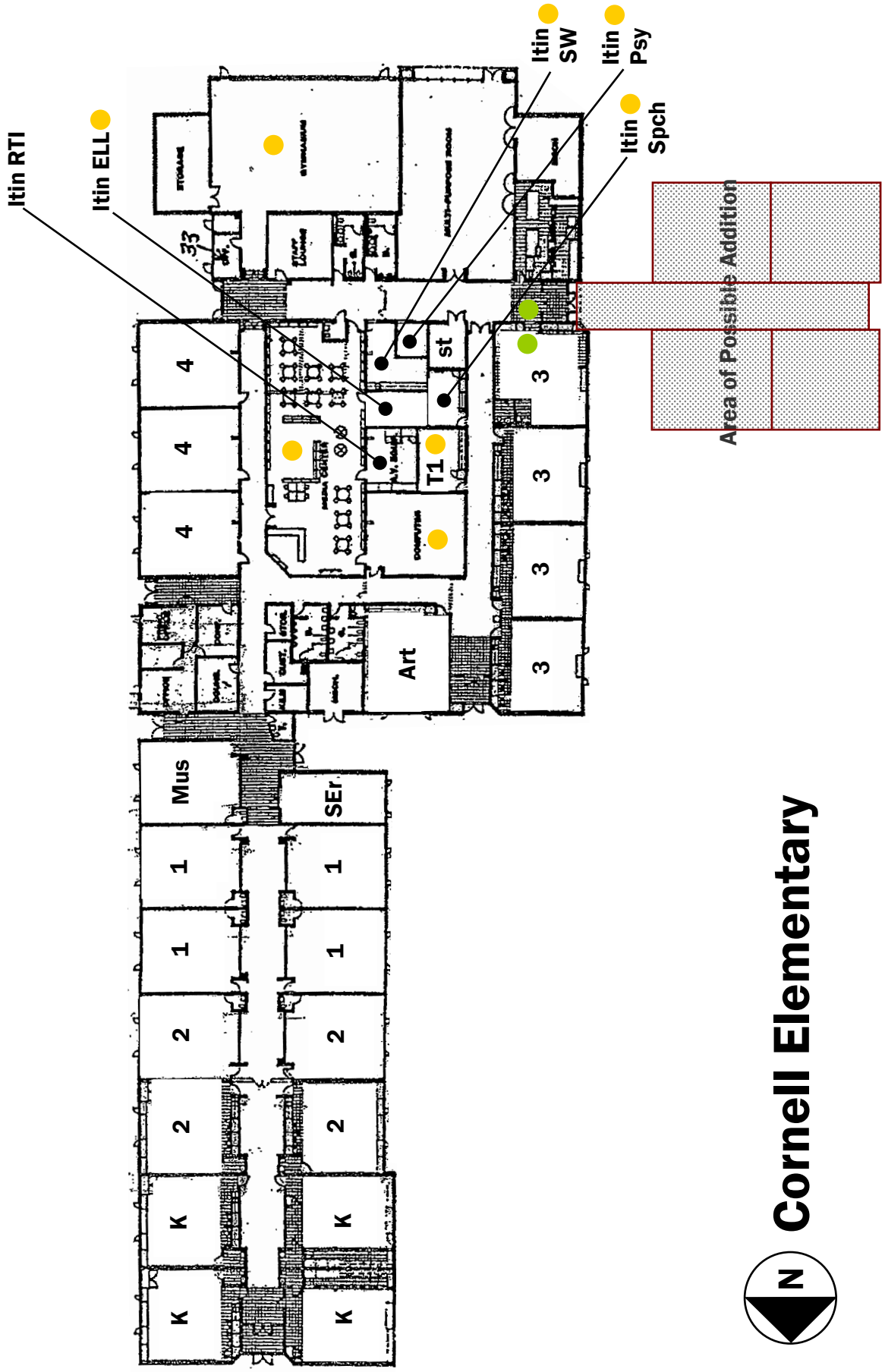
- All existing classrooms are utilized, and the enrollment growth continues. For the 2018/19 school year, the music room will become a general education classroom. The music room will be constructed within the media center which will likely become an acoustic issue.
- The building can support additions to create appropriate general education classrooms and an appropriate music room. See plans.

Program

- The time-out room is currently inside the Social Worker office and should be separate.
- Provide a Sensory Room.

Deficiencies Legend:

- Classrooms without natural light
- Code compliance: furniture in corridors
- Indoor Air Quality concerns
- Acoustic separation



Cornell Elementary



Imagery ©2018 Google, Map data ©2018 Google 100 ft



Cornell Elementary

 Area of Possible Addition

Educational Assessment

Hiawatha Elementary

Walkthrough Date: June 5, 2018

Data

Grade Levels Served: **PK-4**

General Education Teaching Stations: **20 - 24**

Capacity based on District Capacity Limits: **524 - 630**

Specials including Music, Art and Physical Education on an ABC schedule (one special per day per classroom)

Support spaces include Media Center and Cafeteria.

This elementary is the largest in the district and provides a welcoming environment for the students. It has classrooms of relatively standard size in a rectangular configuration. It was originally designed for K-5 which leaves one pod of four classrooms open for special programs including one BASIC classroom, an additional Core Enrichment (Specials) program and ELL (English Language Learners).

Natural Light

- The floor plan has a central core with double loaded pods which allows for natural light or views from all classrooms. The central core including the Media Center, Art, Music and Gym, does not have any natural light. Each of these spaces could have skylights added to introduce natural light.

Acoustics

- Most classroom areas are acoustically isolated with no significant issues expressed.
- Horizontal unit ventilators are utilized in the classrooms. These are the loudest of the mechanical systems utilized in school facilities. When these systems have reached their useful life, they should be replaced by a quieter system such as a ducted vertical unit ventilator system. There were no significant mechanical sound issues present at the time of the walkthrough.

Code Issues Impacting Education

- There were small learning areas at the windows in the core of the building that have furniture present. The issue can be addressed architecturally but will require significant modification. The State Fire Marshall will require removal of the furniture when they walk through.

Indoor Air Quality

- The Media Center and Administration are air conditioned, but the general education classrooms are not. Add air conditioning to the classrooms.
- The horizontal unit ventilators do not effectively distribute air throughout the space. See recommendation for replacement in Acoustics section.
- There were no odors present at the time of walkthrough.

Furnishings

- Existing classroom furnishings are flexible for current standards. The existing student seats are hard plastic, but in good condition. Any new student seating purchases should be ergonomic.

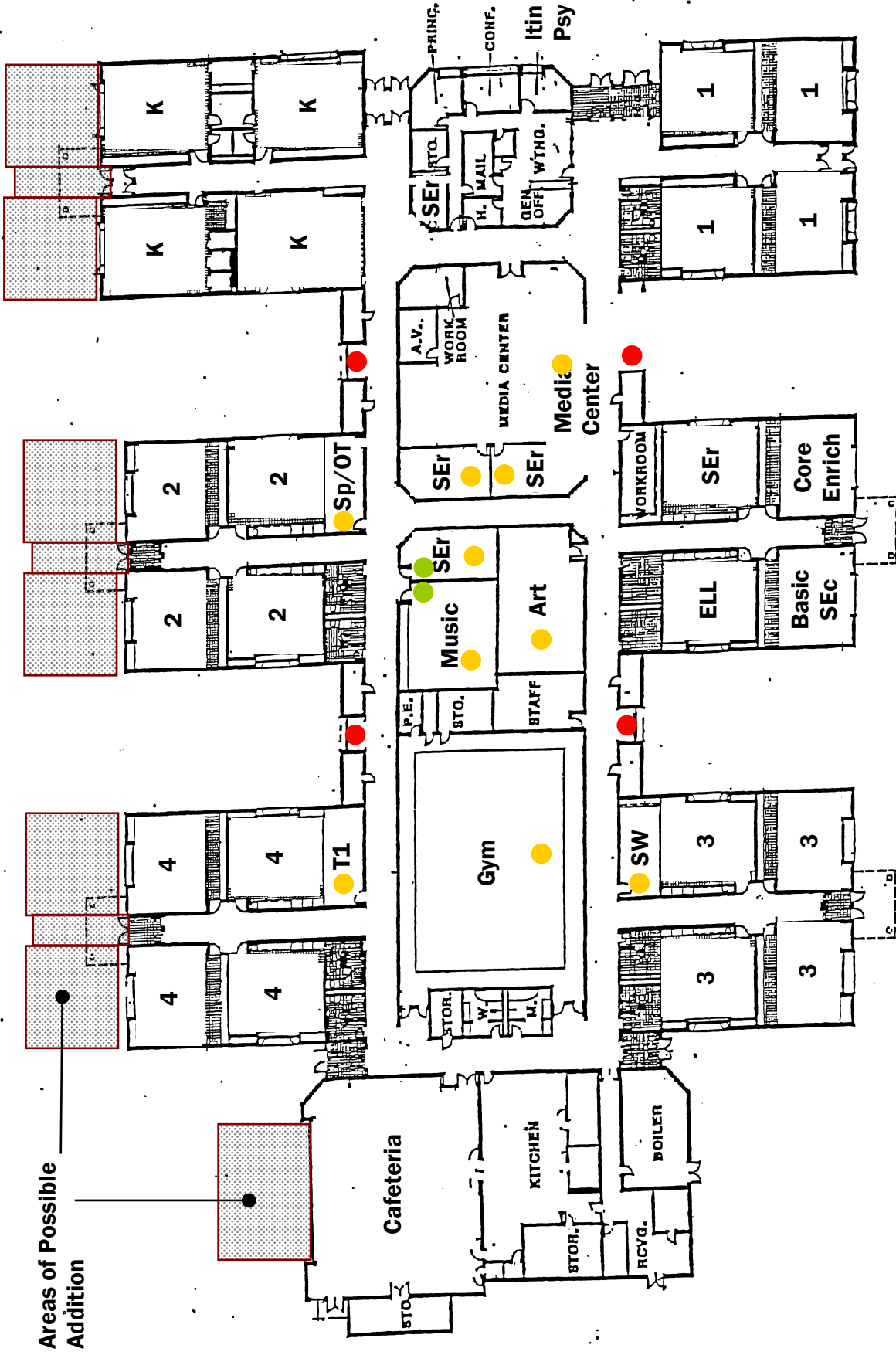
- Media center furniture is solid wood construction. When this furniture has reached its useful life, new furnishings should be lighter-weight with smaller tables for ease of reconfiguration with ergonomic student seats.

Enrollment

- All existing spaces are fully utilized. To accommodate future growth without building additions, the west central pod could be converted back to general education classrooms and the media center could be subdivided to create space for the dislocated special programs.
- If the enrollment trend increases, one additional Specials space should be added to the building to accommodate the schedule (ABCD Schedule).
- The building can support additions to create additional general education or Specials classrooms. See plans.

Program

- Move classroom coat storage to corridor lockers to free more space within the classrooms.



Areas of Possible Addition

- Deficiencies Legend:**
- Classrooms without natural light
 - Code compliance: furniture in corridors
 - Indoor Air Quality concerns
 - Acoustic separation

Hiawatha Elementary





Imagery ©2018 Google, Map data ©2018 Google 100 ft



Hiawatha Elementary



Area of Possible Addition

Educational Assessment

Edgewood Elementary

Walkthrough Date: August 7, 2018

Data

Grade Levels Served: **Early Childhood Center**

General Education Teaching Stations: **11-13**

Capacity based on District Capacity Limits: **288 - 341**

Specials including Music, Art and Physical Education

Support spaces include Media Center and Cafeteria.

This elementary is currently utilized as an early childhood center. It would not be difficult to convert to a one section elementary while maintaining the early childhood component. It has classrooms of varied size in a square or rectangular configuration. There are no categorical special education programs. There are two classroom wings, one with a large extended learning area (Project Area).

Natural Light

- Each classroom has natural light.

Acoustics

- Most classroom areas are acoustically isolated with no significant issues expressed.
- Horizontal unit ventilators are utilized in the classrooms. These are the loudest of the mechanical systems utilized in school facilities. When these systems have reached their useful life, they should be replaced by a quieter system such as a ducted vertical unit ventilator system. There were no significant mechanical sound issues present at the time of the walkthrough.

Code Issues Impacting Education

- No issues at the time of walkthrough.

Indoor Air Quality

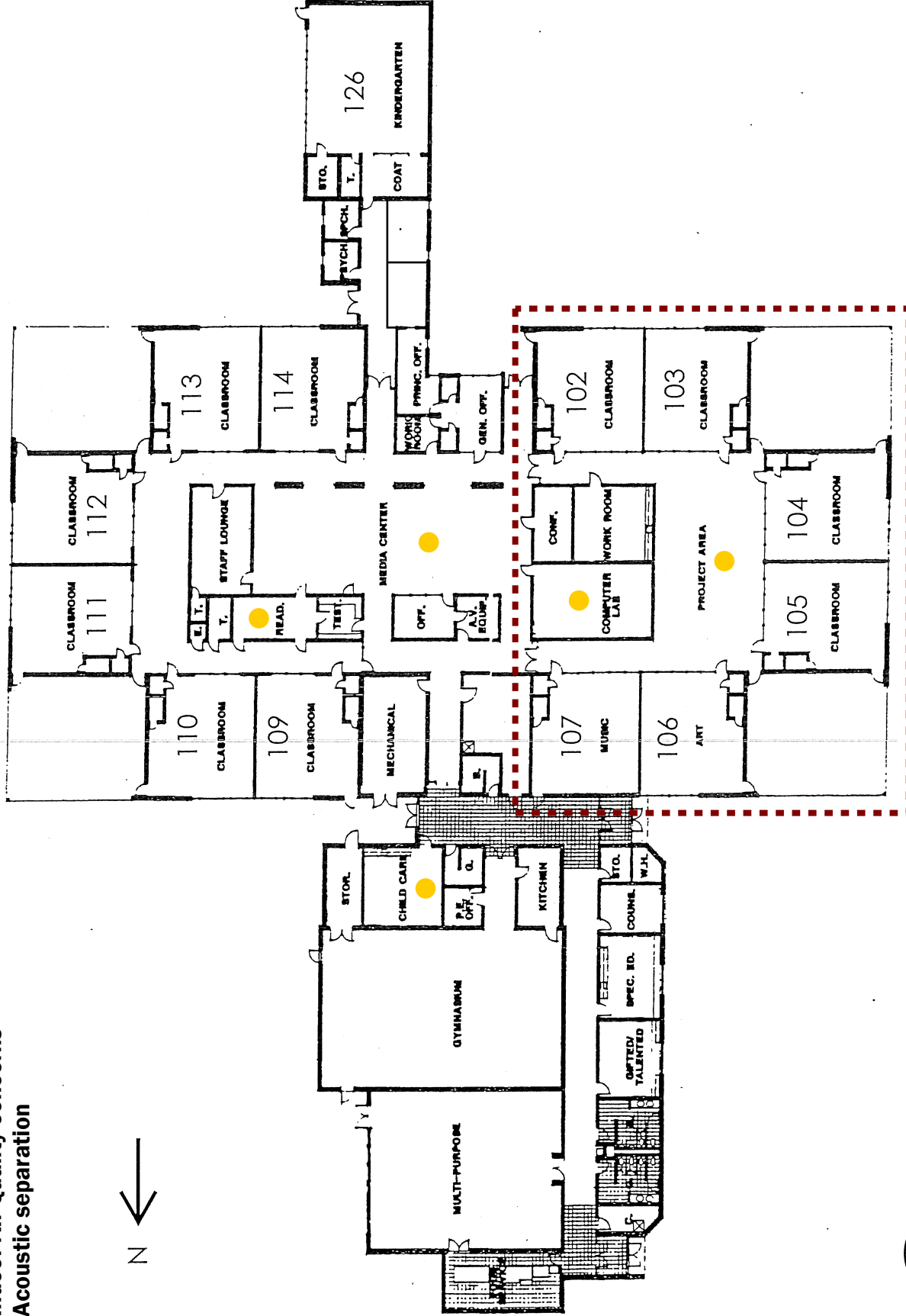
- The general education classrooms are not air conditioned. Add air conditioning
- The horizontal unit ventilators do not effectively distribute air throughout the space. See recommendation for replacement in Acoustics section.
- There were no odors present at the time of walkthrough.

Furnishings

- Existing classroom furnishings will need to be replaced.

Deficiencies Legend:

- Classrooms without natural light
- Code compliance: furniture in corridors
- Indoor Air Quality concerns
- Acoustic separation



remodel pod for 1-section

Edgewood Elementary



Educational Assessment

Wardcliff Elementary

Walkthrough Date: August 7, 2018

Data

Grade Levels Served: **Not currently in use**

General Education Teaching Stations: **11-13**

Capacity based on District Capacity Limits: **288 - 341**

Specials including Music, Art and Physical Education

Support spaces include Media Center and Cafeteria.

This elementary is currently utilized as a storage facility for the district. It is similar in configuration with Cornell Elementary without some of the more recent additions and modifications. It has classrooms of varied size in a square or rectangular configuration. There are no categorical special education programs.

Natural Light

- The floor plan is a double loaded corridor which allows for natural light or views from nearly all student-occupied spaces except for the Media Center, Learning Lab and itinerant spaces. Each of these spaces could have skylights added to introduce natural light.
- The gymnasium, despite having outside walls, does not have any natural light. Punched openings with translucent panels could be added to bring natural light into the space.

Acoustics

- Most classroom areas are acoustically isolated with no significant issues expressed.
- Horizontal unit ventilators are utilized in the classrooms. These are the loudest of the mechanical systems utilized in school facilities. When these systems have reached their useful life, they should be replaced by a quieter system such as a ducted vertical unit ventilator system. There were no significant mechanical sound issues present at the time of the walkthrough.

Code Issues Impacting Education

- No issues at the time of walkthrough.

Indoor Air Quality

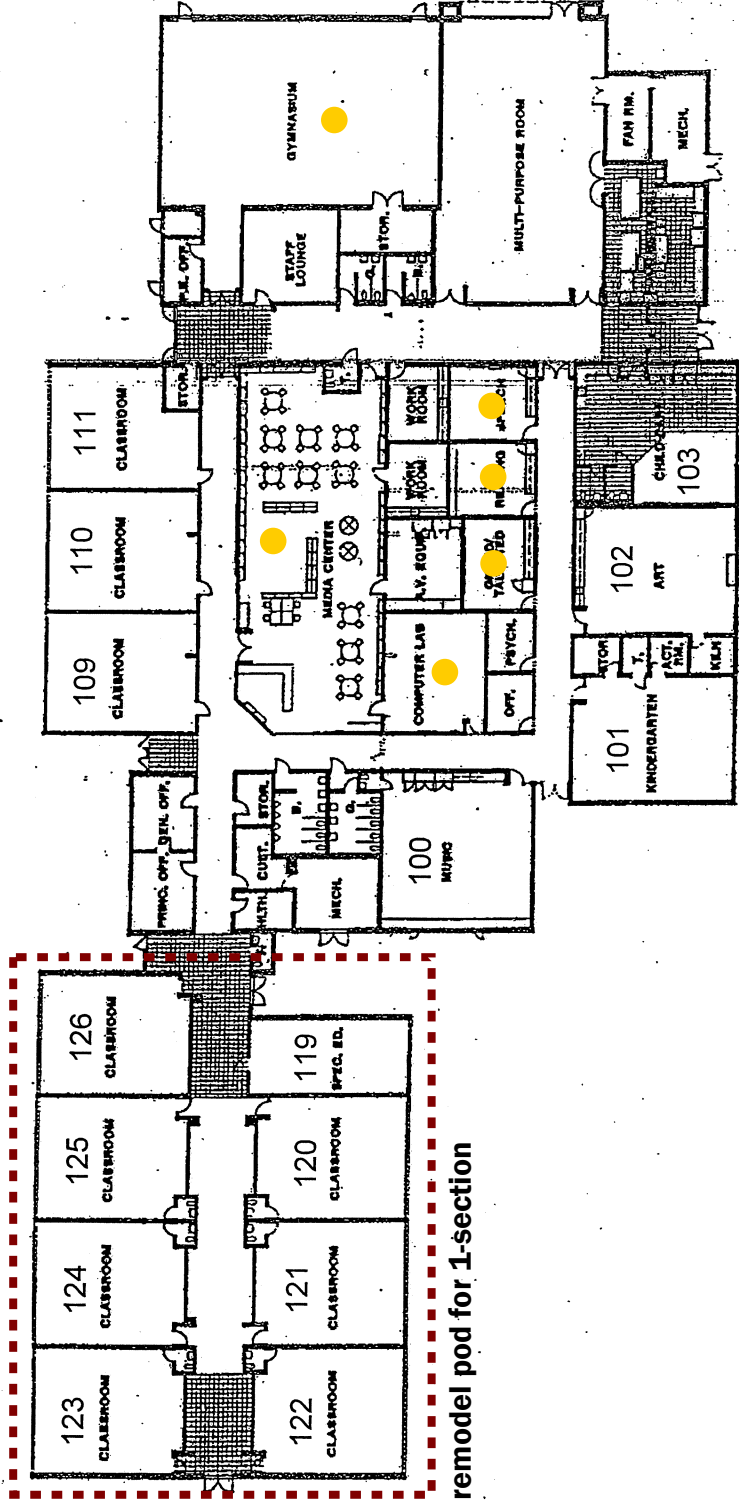
- The general education classrooms are not air conditioned. Add air conditioning
- The horizontal unit ventilators do not effectively distribute air throughout the space. See recommendation for replacement in Acoustics section.
- There were no odors present at the time of walkthrough.

Furnishings

- Existing classroom furnishings will need to be replaced.

Deficiencies Legend:

- Classrooms without natural light
- Code compliance: furniture in corridors
- Indoor Air Quality concerns
- Acoustic separation



remodel pod for 1-section



Wardcliff Elementary